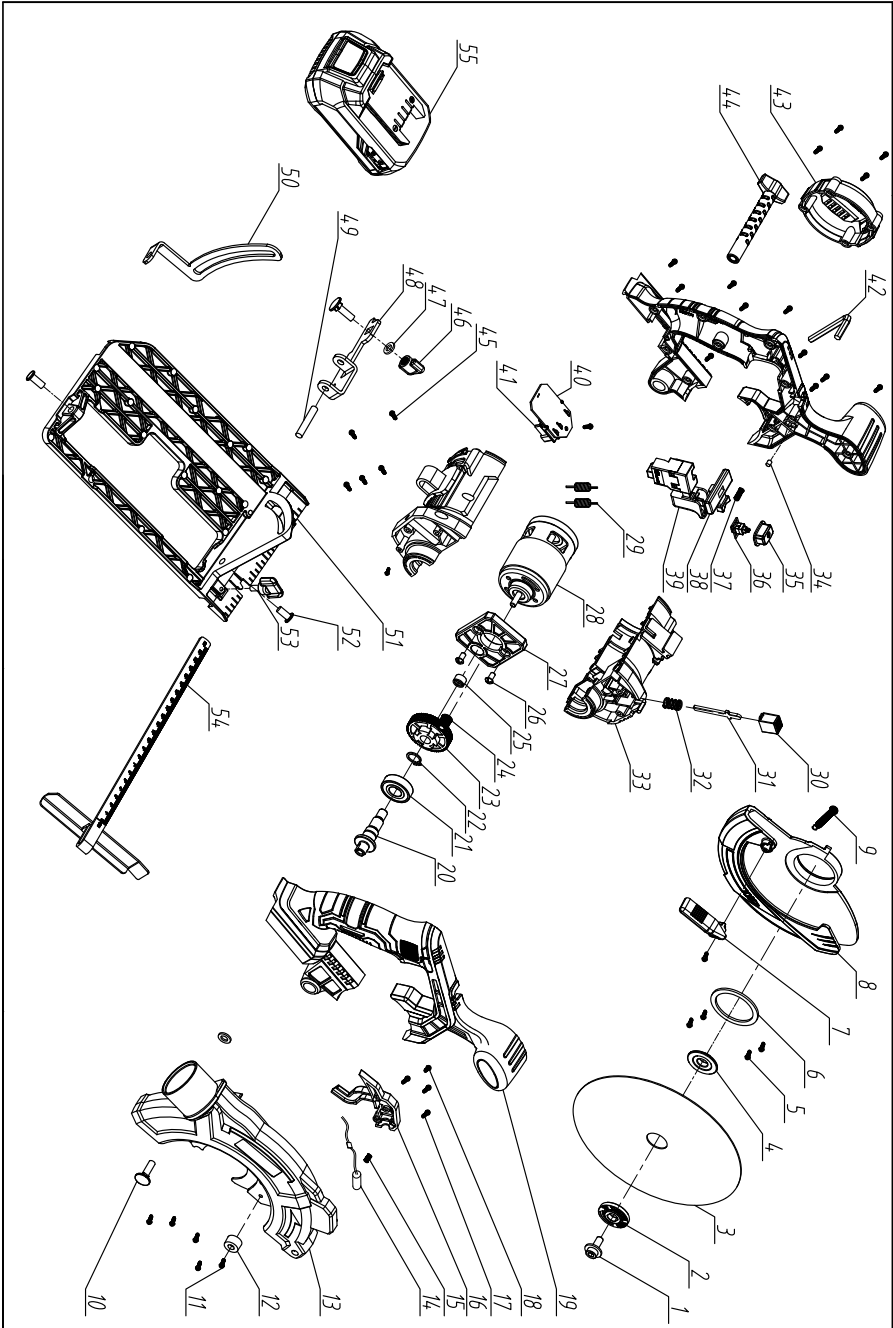


### EXPLODED VIEW OF RDP-KCS20



## PARTS LIST RDP-KCS20

|     |                             |    |     |   |   |
|-----|-----------------------------|----|-----|---|---|
| 1.  | Hexagon socket flange screw | 1  | 37. | Shift pressure spring                         | 1 |
| 2.  | Top flange                  | 1  | 38. | push rod                                      | 1 |
| 3.  | Electric circular saw blade | 1  | 39. | Single speed switch for electric circular saw | 1 |
| 4.  | After the flange            | 1  | 40. | Fuselage panel                                | 1 |
| 5.  | tapping screw               | 4  | 41. | scaffold                                      | 1 |
| 6.  | Protection linking piece    | 1  | 42. | socket head wrench                            | 1 |
| 7.  | The cover handle            | 1  | 43. | rear cover                                    | 1 |
| 8.  | Activities cover            | 1  | 44. | locknut                                       | 1 |
| 9.  | Cover the spring            | 1  | 45. | tapping screw                                 | 9 |
| 10. | Square neck screw           | 2  | 46. | Angle adjusting nut                           | 1 |
| 11. | tapping screw               | 15 | 47. | gasket  | 2 |
| 12. | limited post                | 1  | 48. | Angle control panel                           | 1 |
| 13. | shield                      | 1  | 49. | elastic cylindrical pin                       | 1 |
| 14. | Laser marker                | 1  | 50. | Depth control panel                           | 1 |
| 15. | spring                      | 1  | 51. | bottom plate                                  | 1 |
| 16. | lampshade                   | 1  | 52. | Flat head half hollow rivet                   | 2 |
| 17. | tapping screw               | 5  | 53. | set screw                                     | 1 |
| 18. | tapping screw               | 2  | 54. | Guide   | 1 |
| 19. | chassis                     | 1  | 55. | battery pack                                  | 1 |
| 20. | output shaft                | 1  |     |   |   |
| 21. | plain bearing               | 1  |     |   |   |
| 22. | φ12 Axis circlip            | 1  |     |   |   |
| 23. | rack wheel                  | 1  |     |   |   |
| 24. | The motor gear              | 1  |     |   |   |
| 25. | needle bearing              | 1  |     |   |   |
| 26. | Cross band mat screw        | 2  |     |   |   |
| 27. | locking block               | 1  |     |   |   |
| 28. | motor                       | 1  |     |   |   |
| 29. | inductance                  | 2  |     |   |   |
| 30. | Shaft lock button           | 1  |     |   |   |
| 31. | Locks a iron                | 1  |     |   |   |
| 32. | Lock knob spring            | 1  |     |   |   |
| 33. | Gear box bottom cover       | 1  |     |   |   |
| 34. | Shockproof circle           | 1  |     |   |   |
| 35. | Lamp switch button          | 1  |     |   |   |
| 36. | Control circuit board       | 1  |     |   |   |